

# Lime

Three bedroom home



Where you  
want to be

  
**Harwood**  
Homes

# Lime

## Three bedroom home

Benefitting from the element of flexibility, The Lime is a 3 bedroom home crafted to the high standards of modern living. The open-plan kitchen/dining area acts as the hub of the home, whilst the en-suite master bedroom provides an enviable air of convenience.

### Ground floor





Lounge	18'2" x 10'6"	5.54 x 3.19 m
Kitchen/ Dining	18'2" x 9'7"	5.54 x 2.93 m
Cloaks	6'2" x 3'10"	1.87 x 1.16 m

### First floor

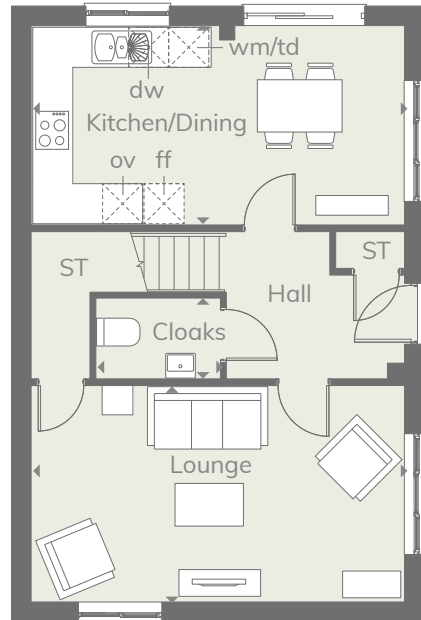
Bedroom 1	18'3" x 9'9"	5.55 x 2.97 m
En-suite	8'2" x 4'2"	2.49 x 1.27 m
Bedroom 2	10'10" x 8'11"	3.30 x 2.73 m
Bedroom 3	10'10" x 8'11"	3.30 x 2.73 m
Bathroom	7'5" x 5'7"	2.26 x 1.70 m

Customers should note this illustration is an example of the Lime house type. All dimensions indicated are approximate and the furniture layout is for illustrative purposes only. Homes may be 'handed' (mirror image) versions of the illustrations, and may be detached, semi-detached or terraced. Materials used may differ from plot to plot including render and roof tile colours. Detailed plans and specifications are available for inspection for each plot at our Sales Centre during working hours and customers must check their individual specifications prior to making a reservation.

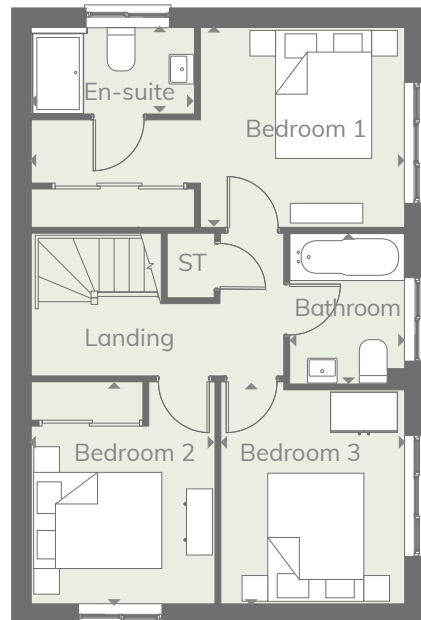
#### KEY

 Hob	wm	Washing machine space
 Oven	td	Tumble dryer space
 Fridge/freezer	ST	Cupboard
 Dishwasher		

Ground floor



First floor



**CONSUMER  
CODE FOR  
HOME BUILDERS**

[www.consumercode.co.uk](http://www.consumercode.co.uk)

† Denotes where dimensions are taken from. All wardrobes are subject to site specification. Please see Sales Consultant for further details.

THINK 199764\_EF\_LIME\_DM.1 RV

Discover where you want to be and visit  
**harwoodhomes.co.uk**

  
**Harwood  
Homes**